

Big Bee Rotary Cutter

Owner's Manual



SCL 96

SCL 120

SCD 120

SAFETY PRECAUTIONS

Due to the type of performance for which this machine was designed, the operator should be very careful and practice all safety precautions during operation. Being of basic design throughout the farm equipment industry. Rotary cutters have fast moving blades that can throw objects that the operator runs over. It is possible to do serious injury to yourself or to others, if you fail to read and practice the foregoing safety rules. **ONLY EXPERIENCED** and trained operators with a thorough understanding of the purpose and capabilities of this machine should operate it.

1. **IMPORTANT!** Read and become familiar with the instructions on the rotary cutter decals. These decals have been placed at various places on the machine to remind you to be cautious for your protection, as well as others.
2. Before operating the rotary cutter, carefully inspect the area on which the rotary cutter will be used. Be sure to remove all objects that might be thrown by the rotating blades. Also, note any gullies, ditches, or rough terrain when you are inspecting.
3. Check the machine frequently to be sure there are no loose bolts and that snap rings are in place.
4. Always use and maintain in place all PTO guards furnished with the rotary cutter, as well as the guards furnished with the tractor.
5. Disengage the PTO and shut off the tractor engine before leaving the tractor.
6. It is recommended that the tractor be equipped with a roll-bar and a seatbelt. This is the operators own responsibility for his/her safety.
7. It is noted that on tractors without "live" PTO, the centrifugal force of the rotating blades will tend to force the tractor in the direction of travel. This can result in an accident or injury if the operator does not reduce his speed before turning or allowing adequate distance between the tractor and turning point or obstacle. (Your dealer has free-wheel and over-running couplers to reduce the centrifugal force. The couplers serve as an added safety device.)
8. The blades and PTO shaft will continue to rotate for a short time after the tractor PTO power is shut off. Be sure all rotation has completely stopped before attempting to service the machine or approach it for any reason.

SAFETY PRECAUTIONS - CONTINUED

9. Never position yourself under the machine for any reason. It could fall on you! Never manually feed the machine for any reason. Never put your hands or feet under the deck of the cutter without first being sure that the blades have ceased all movement and all power is shut off.

10. Chain guards should be added to the machine when it is used in areas where people, animals, or property may be hit or endangered by thrown objects. The rapidly rotating blades may strike and throw wire, sticks, loose rocks or trash with considerable force. Even with chain guards, it is recommended that the operator be sure to keep all persons and animals far enough away from the operating area to be completely clear of thrown objects.

11. Never allow riders on machine or tractor!

12. Transport machine at a safe speed.

ASSEMBLY AND SET-UP INSTRUCTIONS

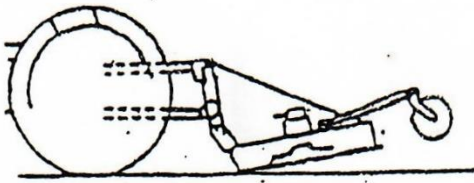
- A. Set up A-frame and position hitch pins in proper position. Be sure to use lock washers and tighten bolts securely. Attach flex chain brace to A-frame then fasten chain end on tailwheel adjustment bracket.
- B. Attach PTO shaft according to instructions/diagram attached to the PTO shaft.
- C. Check all bolts including gearbox mounting bolts, blade bolts and blade carrier bolts.
- D. Adjust the tailwheel bracket to level the rotary cutter or obtain desired cutting position.
- E. Lubricate gearbox, tailwheel hub, tailwheel spindle and PTO U-joints.
- F. Attach rotary cutter to the tractor.

OPERATION

1. Check gearbox for lubricant.
2. Check all lubrication points on PTO shaft and tailwheel.
3. Be sure all bolts are tight and snap rings are in place.
4. Be sure the rotary cutter is properly mounted on the tractor.
5. Adjust and level rotary cutter for desired cutting height.

ADJUSTING LEVEL OF CUTTER ON YOUR TRACTOR

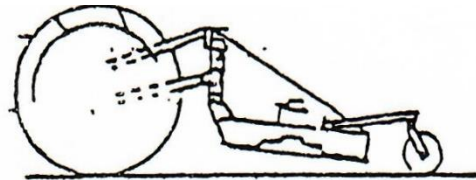
CUTTER TOO LOW IN FRONT



INCORRECT

The above position makes the blade too high causing skipping and uneven cutting. It also allows the blades to strike the ground causing the slip clutch to slip excessively and the blades to become worn.

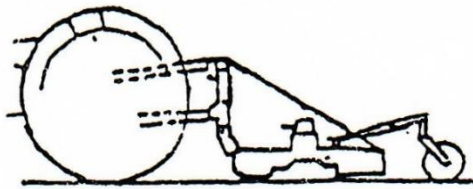
CUTTER TOO LOW IN REAR



INCORRECT

The above position causes wear and tear on the tailwheel. The rear skirt drags allowing unnecessary debris to be collected under the rotary cutter.

CUTTER IS LEVEL



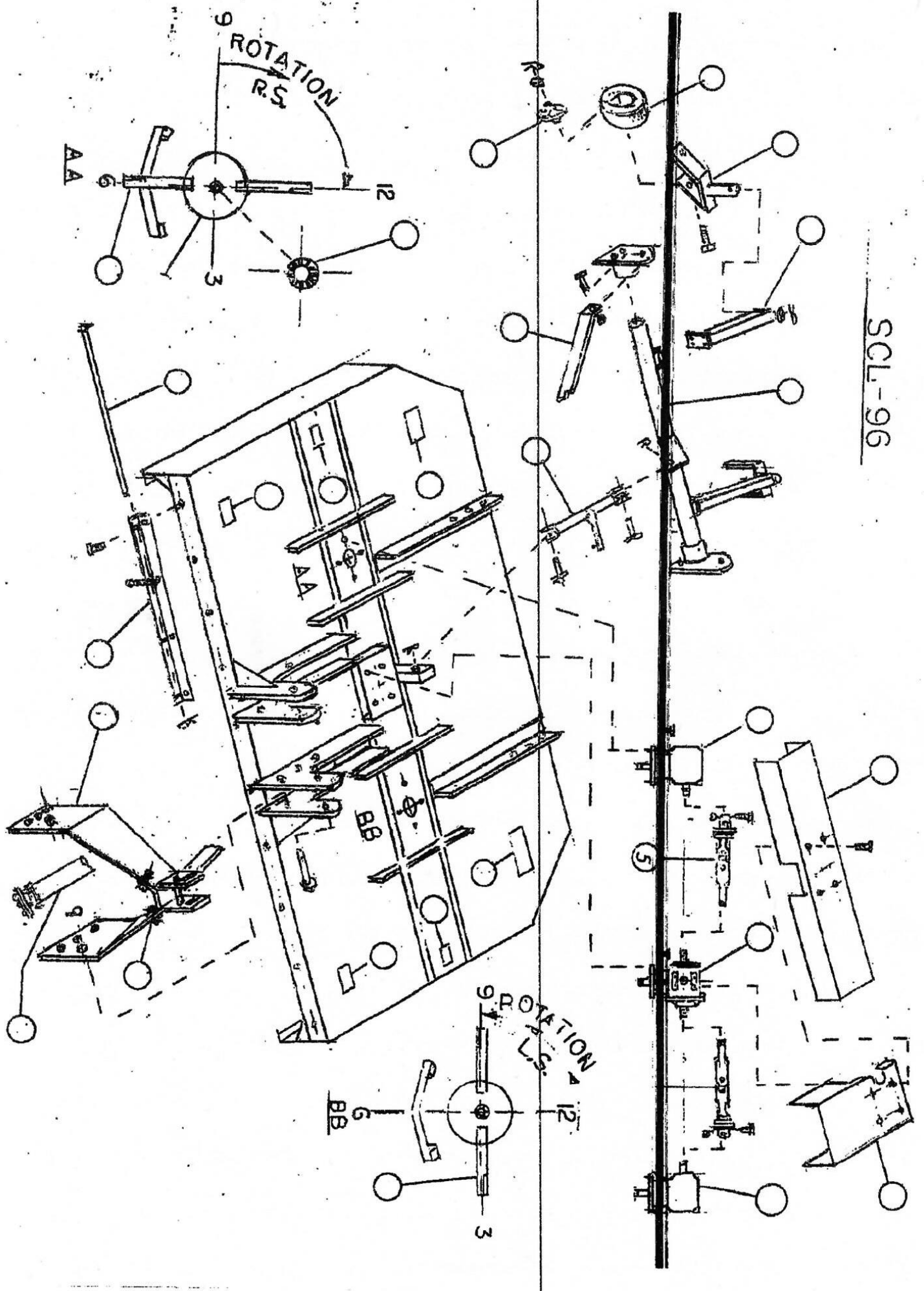
CORRECT

STARTING FOR THE FIRST TIME

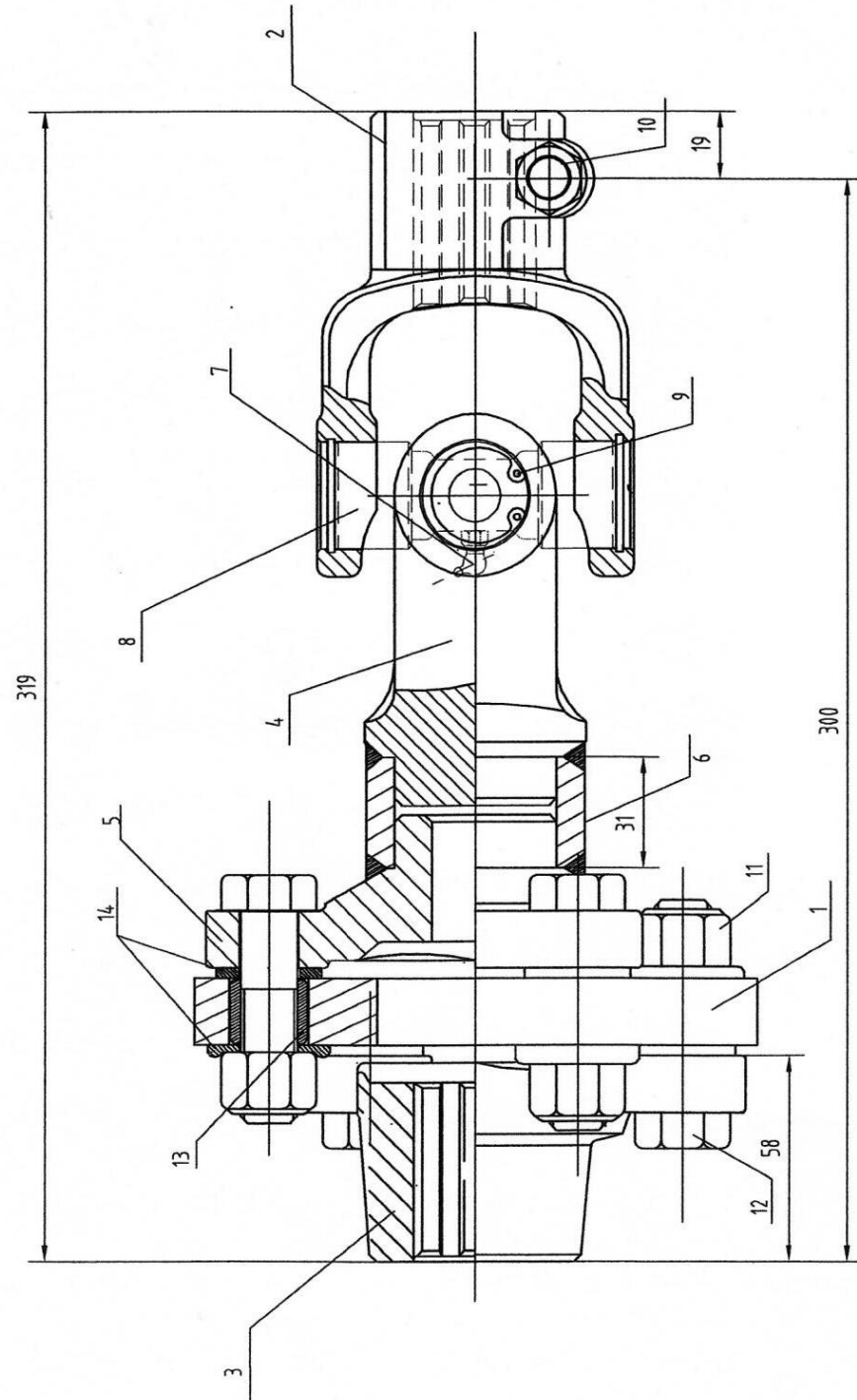
1. If everything is in place and the rotary cutter is properly connected to the tractor, start the tractor and raise the rotary cutter slowly. While watching the PTO shaft, raise and lower the rotary cutter until you have positioned the PTO shaft to the shortest telescoping point. This position will check the PTO shaft to make sure it is not too long. With the shaft positioned at its shortest length, the two telescoping shafts should lack two inches (2") meeting. Now, check the PTO shaft to be sure it is not too short.** Position the rotary cutter so that the PTO shaft will be at its longest position. At this position, the two telescoping shafts should engage at least six inches (6"). Be sure the PTO clears the front of the cutter deck when the cutter is raised. If it does not clear, readjust the topline on your tractor to correct this problem. You may want to set the stop on your hydraulic control lever so that the cutter will not accidentally be raised too high. Now, engage the PTO slowly. Let the rotary cutter run slowly for several seconds and gradually increase throttle to operating speed. Watch carefully for signs of excessive vibration or unusual noises. If any are noticed, disengage PTO, shut off tractor immediately, wait for all moving parts to stop completely and investigate cause. A new gearbox may be noisy at first, but usually a few hours of use will mesh the gears and create a quieter, smoother operation.
2. We suggest that you get the feel of your rotary cutter on open familiar ground. Remember that the centrifugal force of the rotary blades and carrier can keep pushing you forward even after you have disengaged your clutch, unless your tractor is equipped with live PTO or an over-running coupler. Therefore, approach obstacles with caution.

** If it is determined that the PTO shaft is either too long or too short for your tractor, see your dealer for correct shaft lengths. This is not a frequent problem. However, the correct shaft lengths should be checked to avoid damage to the PTO shaft or other components.

SCL-96



其余



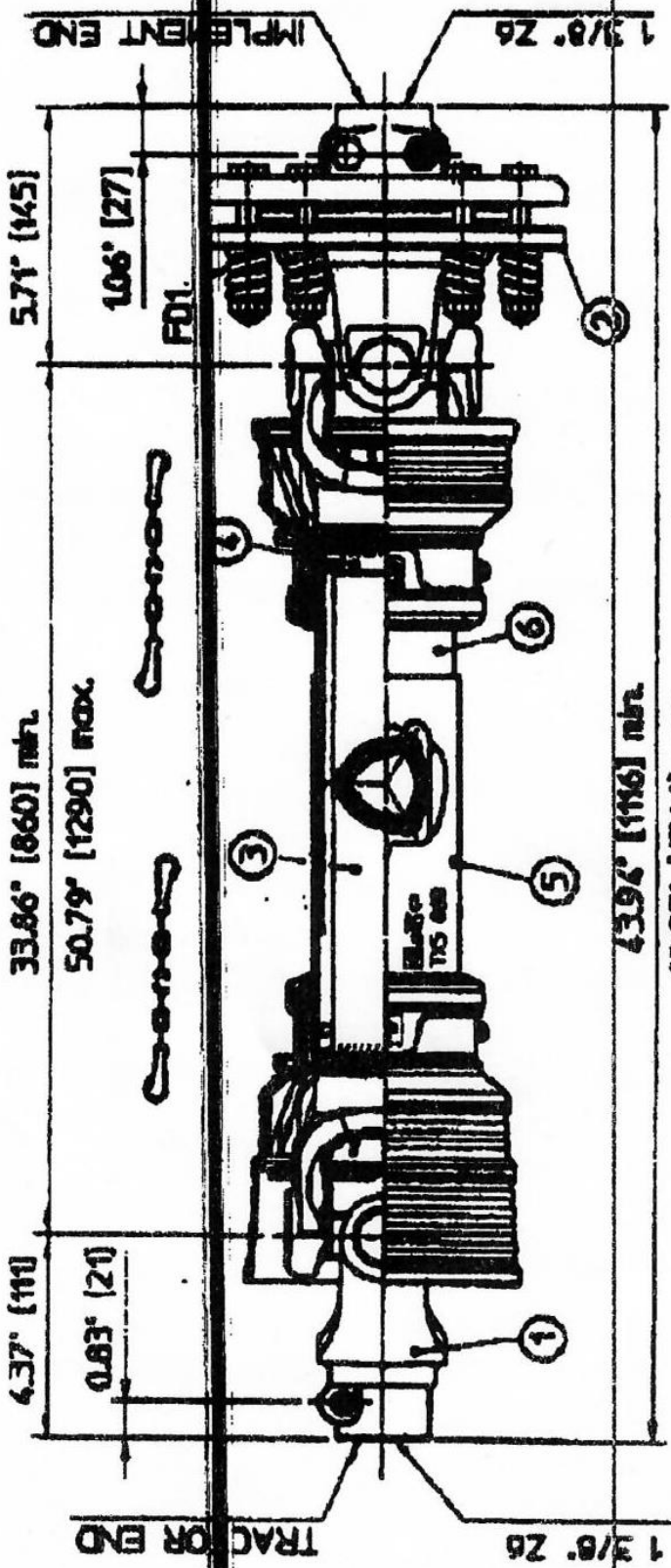
1:未注倒角 $2 \times 45^\circ$
 2:去毛刺, 锐角倒钝表面喷漆.

NO	CODE	DESCRIPTION	QTY	SPEC
1	RW-120506-1-6	nylon with rubber pad	2	
2	RW-120506-2	1-3/8 6 S5 yoke	1	
3	RW-120506-3	1-3/8 6 axle head	1	
4	RW-120506-4	S5 yoke	1	
5	RW-120506-5	axle head	1	
6	RW-120506-6	SPACER	1	
7	RW-120506-7	M6 nipple	2	
8	RW-120506-8	S5 universal joint	1	
9	RW-120506-9	ring	4	
10	RW-120506-10	M12bolt/nut	1set	
11	RW-120506-11	M16 nut	6	
12	RW-120506-12	M16x60 bolt	6	
13	RW-120506-13	SPACER	6	
14	RW-120506-14	WASHER	12	

借通用件登记

描述
 校核
 旧底图总号
 签字
 日期

标记/体素 设计	更改文件号 核定	签字	日期
审核 工艺	日期	共 页	第 页
图样标记		重量	比例
RW-120505			



33.86' [1060] min.

50.79' [1290] max.

4.37' [140]

0.83' [21]

5.71' [145]

1.06' [27]

43.94' [1416] min.

60.87' [1546] max.

WATS# 1-800-445-3943
 FAX 256-358-0300
 IMPORTER-MANUFACTURER-DISTRIBUTOR

Darrell Harp Enterprises, Inc.

JACOBS TRACTORS, FARM EQUIPMENT AND ACCESSORIES
 819 4th ST. NW / P.O. BOX 140 / GOLDEN ROAD
 RED BAY, ALABAMA 35582-0140

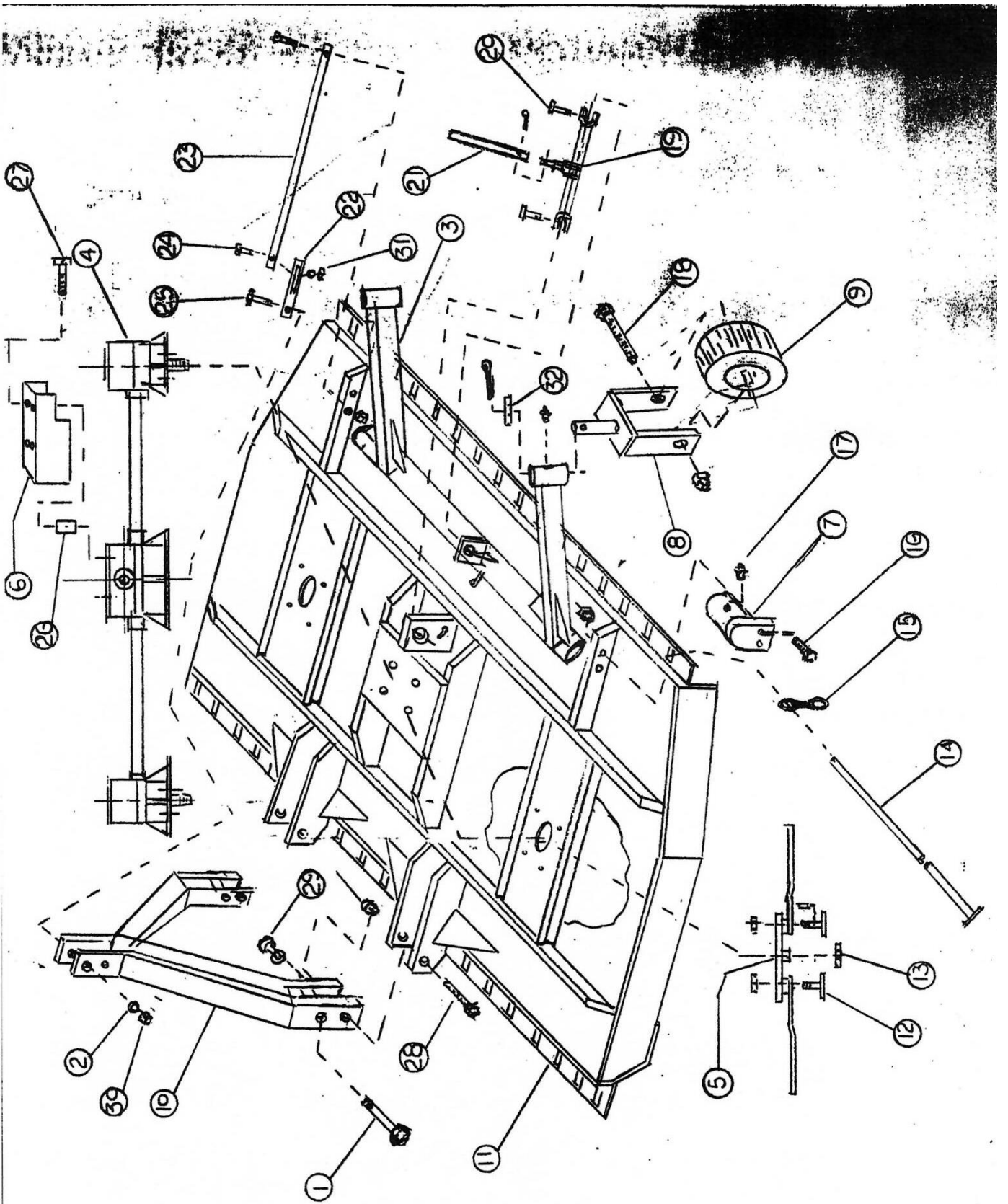
EDWARD TUCKER (256) 358-4424
 RED BAY, AL 35582 email: edwardtucker@bellsouth.net

QTY	Part Code	Description	Unit
6	1017001		
5	0774001		
4	0520004	WHEEL	
3	1527004	WHEEL	
2	0145000	WHEEL	
1	0774000	WHEEL	
1	0000	WHEEL	

Customer: **DAWSON** Part No: **0000** Qty: **1**

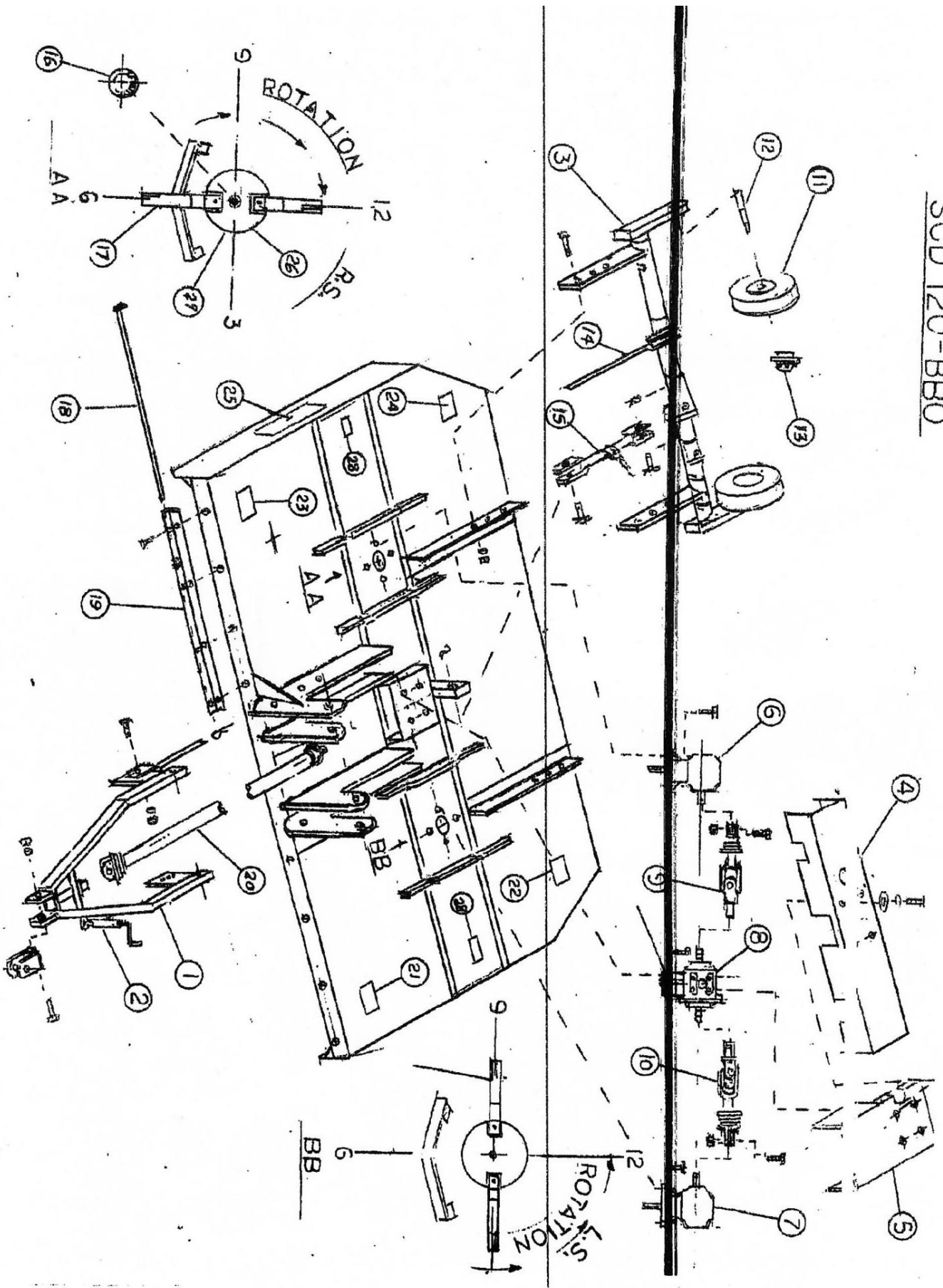
Order No: **0000** Date: **00/00/00**

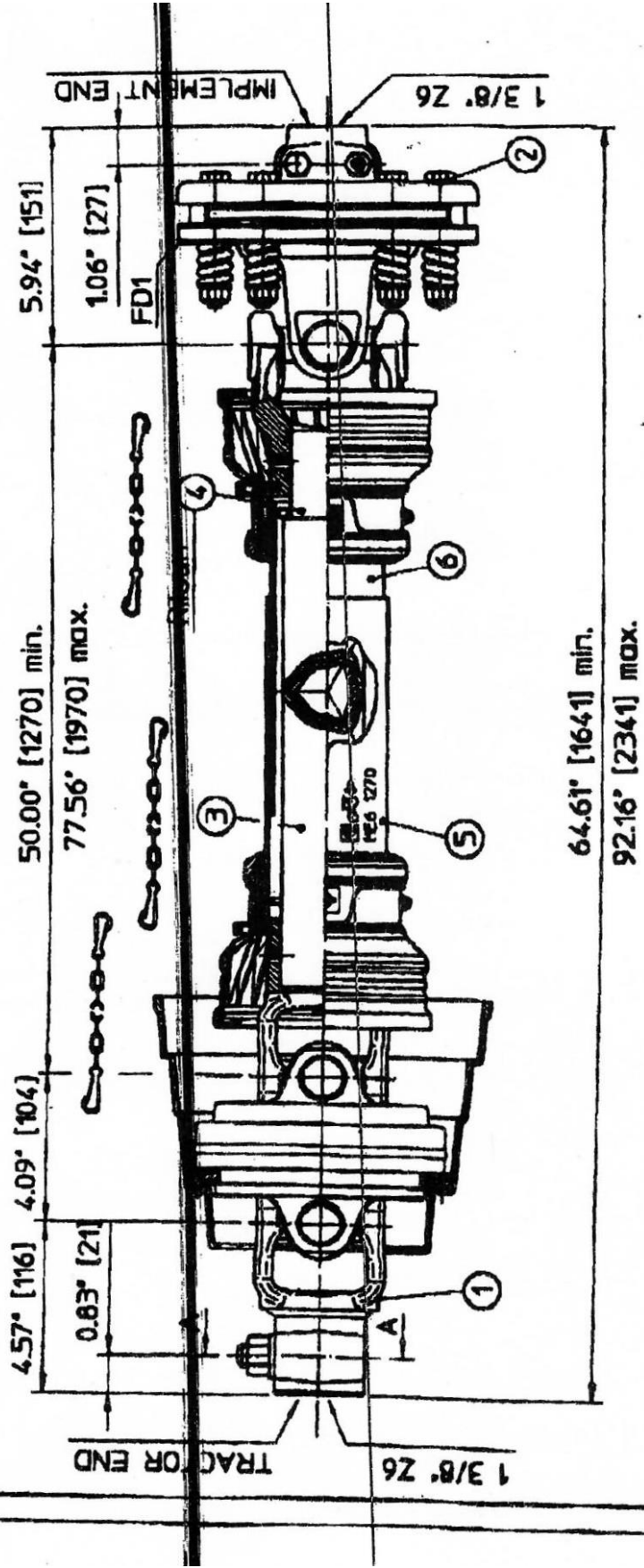
Price: **0000.00** Total: **0000.00**



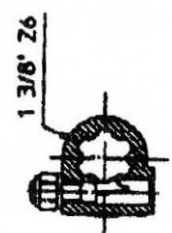
SCL-120

SCD 120-BB0





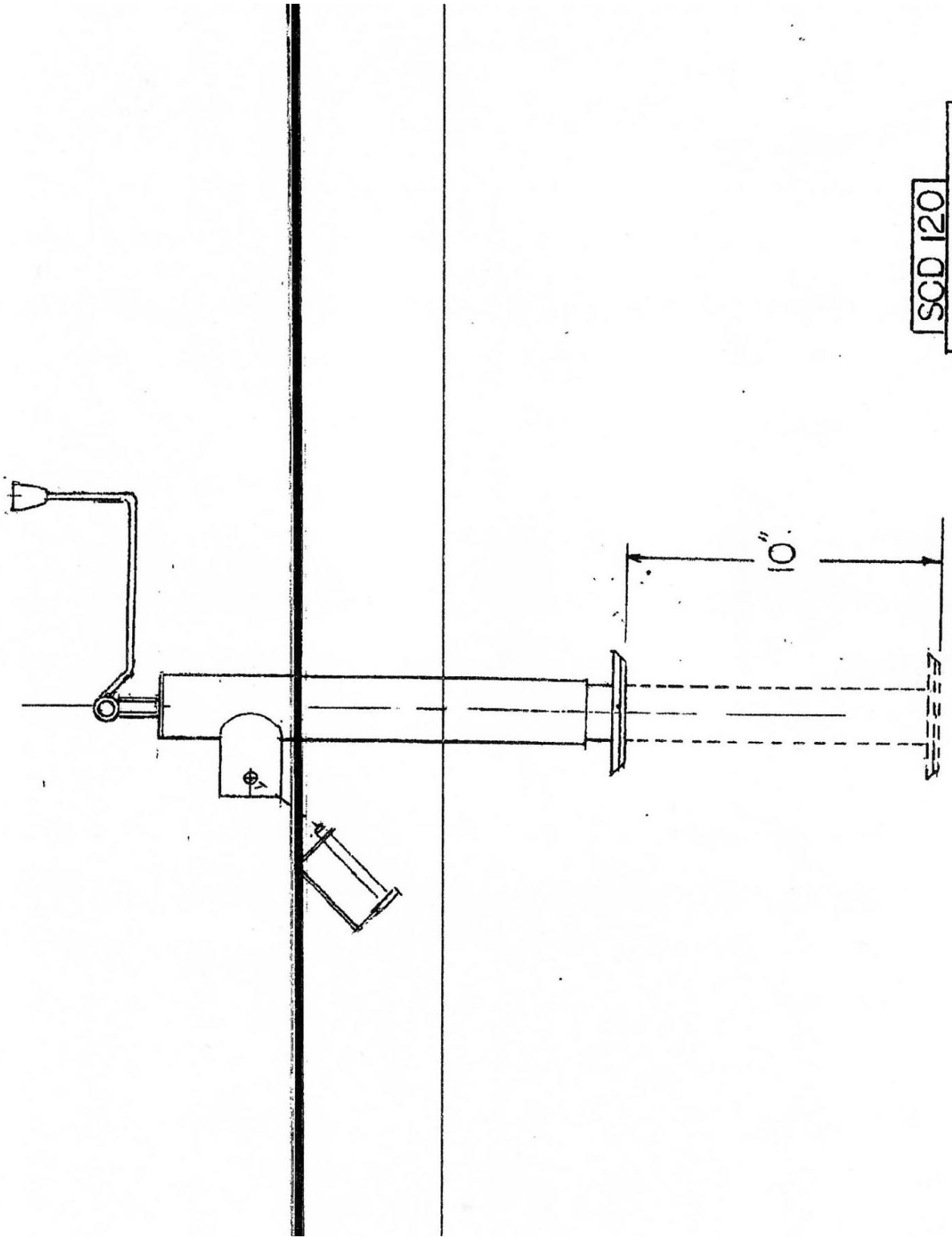
WATTS
 1-800-445-3943
 IMPORTER-MANUFACTURER-DISTRIBUTOR
Darrell Harp Enterprises, Inc.
 LAROLAND TRACTORS, FARM EQUIPMENT AND ACCESSORIES
 819 4th ST. NW / P.O. BOX 140 / GOLDEN ROAD
 RED BAY, ALABAMA 35582-0140
 EDWARD TUCKER (256) 356-4424
 RED BAY, AL 35582 email: edwardtucker@darrellharp.com



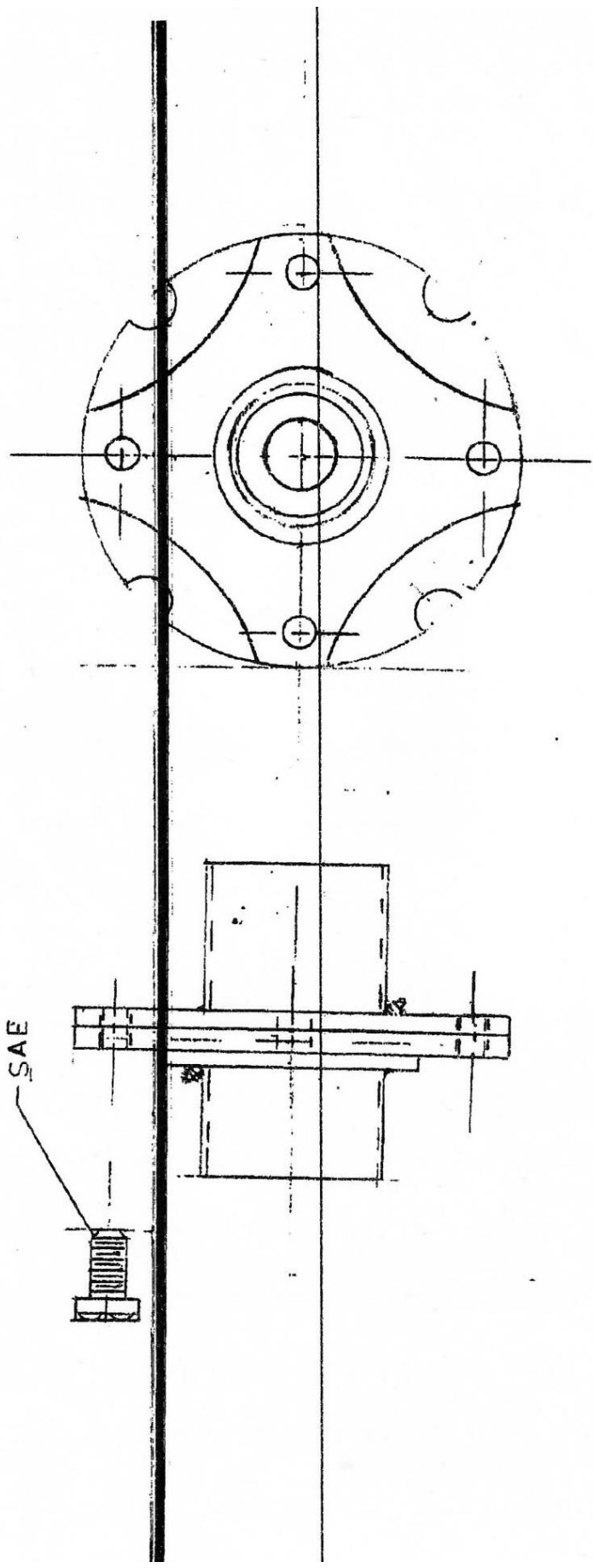
Sez A:A

Rev.	code	description	date
6	1877800		
5	1776100		
4	1546110		
3	1545110		
2	1346018		
1	1006823		

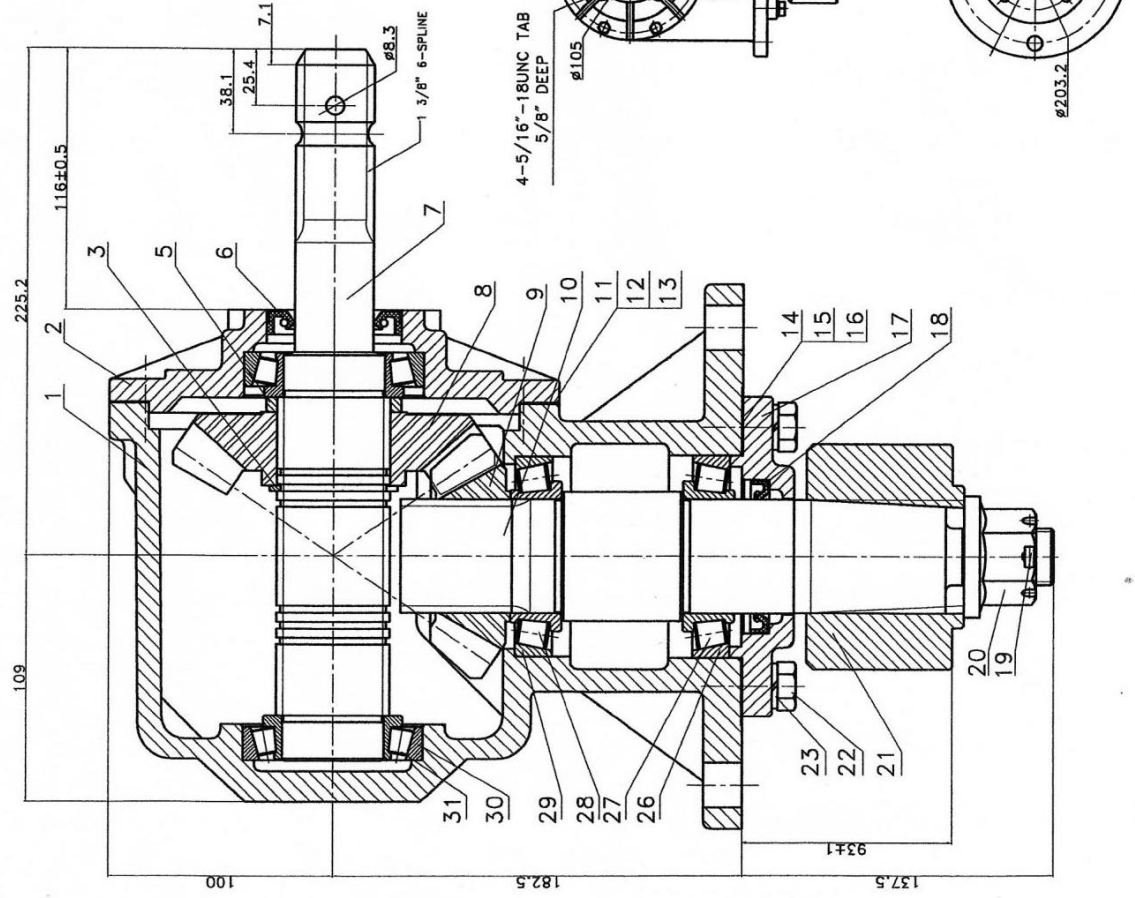
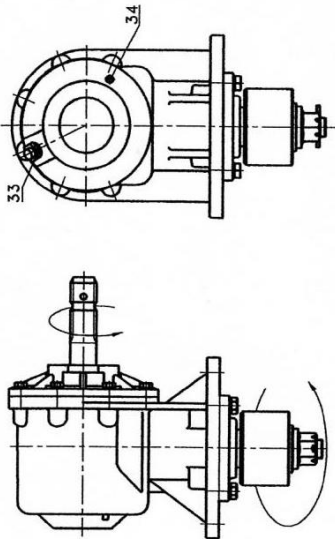
ME6127-1875
 1006823-046018 CP C. I.



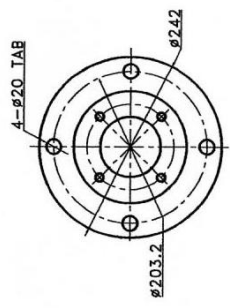
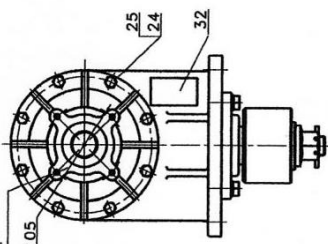
SCD 120
JACK ASSY



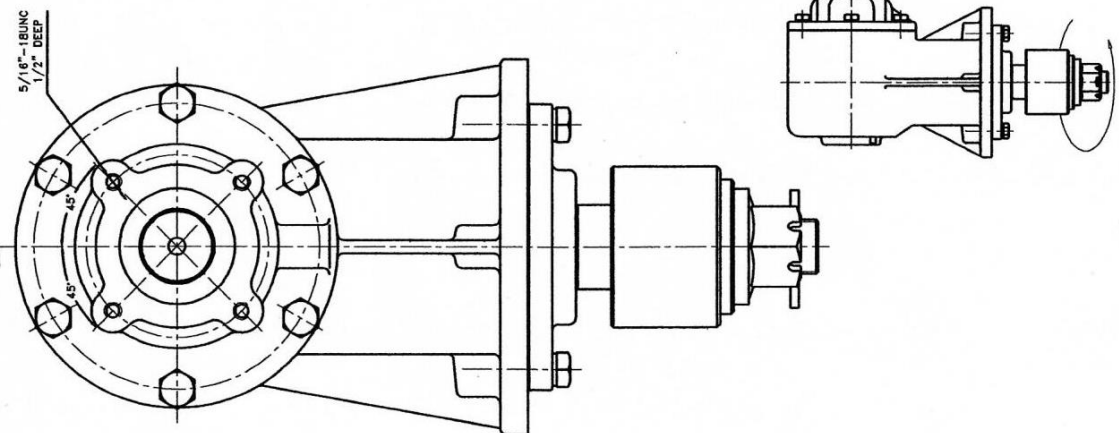
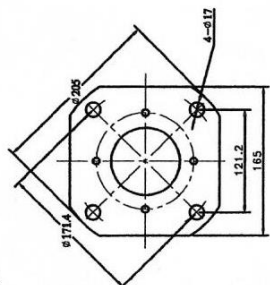
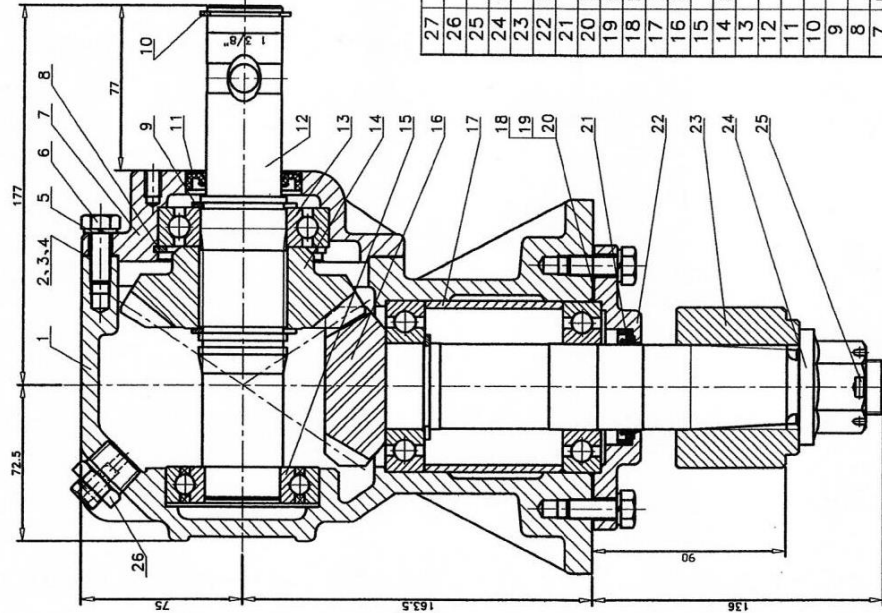
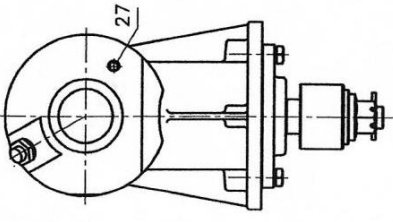
SCL - 96 & 120
HUB ASSY.



4-5/16" - 18UNC TAB
5/8" DEEP



34	RW-503	PIPE PLUG-SQ HEAD	1	KG1/8" - 27NPTF
33	RW-502	PLUG-PRESSURE RELIEF	1	KG1/2" - 14NPTF
32	RW-R0552	TAG	1	50*25
31	RW-108	BEARING CONE	2	LM603049
30	RW-107	BEARING CUP	2	LM603014
29	RW-105	BEARING CUP	1	362A
28	RW-106	BEARING CONE	1	368A
27	RW-104	BEARING CONE	1	368
26	RW-103	BEARING CUP	1	362
25	RW-302	WASHER	8	3/8" - 16UNC*1"
24	RW-301	SCREW	8	3/8" - 16UNC*1"
23	RW-304	WASHER	4	1/2"
22	RW-303	SCREW	4	1/2" - 13UNC*1 1/2"
21	RW-R0431	BLADE HUB	1	
20	RW-R0132	LOCK NUT	1	1" - 14UNC
19	RW-501	SPLINT	1	Ø5*45
18	RW-203	SEAL	1	Ø50.8*Ø68.5*12
17	RW-R0513	OUTPUT CAP	1	
16	RW-R0546	GASKET	var	
15	RW-R0545	GASKET	var	
14	RW-R0544	GASKET	var	
13	RW-R0543	GASKET	var	
12	RW-R0542	GASKET	var	
11	RW-R0541	GASKET	var	
10	RW-R0523	SHAFT-OUTPUT	1	
9	RW-R0524	GEAR-OUTPUT	1	1.3T 1:1.46
8	RW-R0522	GEAR-INPUT	1	1.9T 1:1.46
7	RW-R0621	SHAFT-INPUT	1	3/8" - 6SPLINE
6	RW-204	SEAL	1	Ø35*Ø60*1.1
5	RW-R0551	SPACER	1	
3	RW-404	RETAINING RING	1	Ø58*Ø48*2.5
2	RW-R0512	INPUT CAP	1	
1	RW-R0511	HOUSING	1	
SERIAL	CODE	TITLE	QTY.	SPEC
ASSEMBLY OF				RW-610-6S
				(1:1.46)
				ACCELERATOR
				RW-610-6S



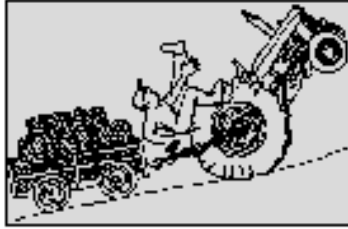
SERIAL	CODE	TITLE	QTY.	SPEC
27	RW-503	PIPE PLUG-SQ. HEAD	1	KG1/8"-27NPTF
26	RW-502	PLUG-PRESSURE RELIEF	1	KG1/2"-14NPTF
25	RW-501	SPLINT	1	Ø5*45
24	RW-R0132	LOCK NUT	1	1"-14UNC
23	RW-R0131	BLADE HUB	1	
22	RW-R0113	OUTPUT CAP	1	
21	RW-R0202	SEAL	1	FB 54*39.7*11
20	RW-R0146	GASKET	var	
19	RW-R0145	GASKET	var	
18	RW-R0144	GASKET	var	
17	RW-R0151	SPACER	1	
16	RW-R0123	GEAR SHAFT-OUTPUT	1	15T 1:1.47
15	RW-102	BEARING	1	6207
14	RW-R0122	GEAR-INPUT	1	22T 1:1.47
13	RW-101	BEARING	3	6208
12	H-R0121	SHAFT-INPUT	1	
11	RW-201	SEAL	1	FB 54*35*11
10	RW-403	RETAINING RING	1	Ø38*33*1.7
9	RW-402	RETAINING RING	3	Ø47*38*2.4
8	RW-401	RETAINING RING	1	Ø85*75*2.5
7	RW-R0112	INPUT CAP	1	
6	RW-301	SCREW	10	3/8"-16*1"
5	RW-302	WASHER	10	3/8"
4	RW-R0143	GASKET	var	
3	RW-R0142	GASKET	var	
2	RW-R0141	GASKET	var	
1	RW-R0111	HOUSING	1	

ASSEMBLY OF
RW-300 (1:1.47)
ACCELERATOR

RW-300

IT IS UP TO YOU

REMEMBER: SAFETY FIRST!!!



BETTER TO BE "SAFE" THAN "SORRY"

Don't find out the hard way that careless actions can make you, your family, your friends, or an innocent by-stander the victim of an accident. Safety is an everyday need. Outfit yourself with a complete safety program.

READ YOUR OPERATOR'S MANUAL THOROUGHLY!!

Know how to operate your machine properly and safely. Always take the necessary safety precautions.



THINK BEFORE YOU ACT

Sold By:

GENERAL MAINTENANCE

1. Tractor and rotary cutter must be shut off (disengaged from any power) before any acts of maintenance are performed.
2. Check oil level in gearbox periodically. Keep level up to check plug. Use SAE 90 or SAE 140 transmission oil. Use caution not to over fill.
3. Lubricate universal joint on PTO shaft every few hours of use. Keep PTO shaft free of dirt and foreign materials so that it will telescope freely to avoid damage to your tractor or rotary cutter.
4. Lubricate tailwheel.
5. Keep blades sharp. When replacing worn blades, be sure to replace in pairs to maintain rotary balance.
6. Keep all bolts tightened properly.

WARRANTY

We warrant each new Big Bee Rotary Cutter against defect in material or workmanship for a period of 90 days or a reasonable period of time dependent upon the type of use of the machine.

In the event that it is necessary to replace or repair any part(s) during the warranty period, go to your dealer with the defective part(s) and they will assist you in obtaining the needed replacement and/or return the defective part(s) to:

DHE Warranty Division
PO Box 140
819 4th Street NW
Red Bay, AL 35582

Neither manufacturer or the dealer shall be held responsible for the loss of use of the machine, loss of time, inconvenience, commercial loss, or consequential damages.

In order for your Big Bee Rotary Cutter to be covered by our warranty policy, the equipment registration form on the back cover must be completed and returned within 10 days after the purchase date.

The warranty policy is not effective unless the equipment registration is recorded in our office.

OWNER REGISTRATION



Owner's Name: _____

Street Address: _____

City: _____

County: _____

State: _____

Zip: _____



Purchased From: _____

Street Address: _____

City: _____

County: _____

State: _____

Zip: _____

Date Purchased: _____



Date: _____

Owner's Signature: _____

Model: _____

Equipment Name: _____

Size: _____